



Coordinator Communiqué

A Forum for Foundation News

March 2009

Post RRFC Institute Issue



Success Story



Ian Schwartz decided to raise funds for Rotary’s US\$200 Million Challenge in lieu of receiving birthday gifts from his friends for his 10th birthday in March. He set a goal of \$250 to raise from friends/classmates. On a Monday, he made a poster board and gave a 2 minute speech at school in front of the entire staff, student body and other parents (about 360-375 people). He then skipped his lunch period and recess for the entire week. He ended up raising \$283.75. His mother, Rotarian Sherilyn Schwartz, told him that she would match his efforts. Ian went to the Eugene Rotary Club (his mother’s club) and gave a 2 minute speech about what he learned from raising money at school and asked if they would help him. **He raised nearly US\$1000 at the club meeting and brought his grand total to \$1500!**

Rotary’s US\$200 Million Challenge

Rotary Fellowships

Rotarian's Wine Appreciation Fellowship (RWF) challenged their existing membership and all prospective members to send them \$100 for Rotary’s US\$200 Million Challenge. The fellowship promised to match that amount with RWF funds for the first 50 contributors and they would receive a Lifetime Membership in the RWF.

Their purpose was to help Rotary’s US\$200 Million Challenge, increase their membership, and encourage the growth of local RWF chapters and to simply be of Rotary service. On December 31, 2008, we sent in a \$10,000 check to the Challenge

The success of this initiative and the recent increase in the Gates Challenge Fund, has prompted us to set aside another \$2,500 to match the contributions of 25 more new members with an interest in wine and we are well on the way to send in another \$5,000 for PolioPlus.

Strategies for Meeting the Challenge

- We would encourage you to work with the District Governor-elects to ensure that a dedicated and enthusiastic Rotarian is appointed in each district to serve as District PolioPlus Chair for the 2009-10 Rotary Year.
- Work with your Zone Challenge Coordinator to ensure that clubs have set a Challenge Goal for upcoming year. Encourage Districts and Clubs to stretch and set a goal that is a challenge but attainable.
- Encourage the 2008-09 District Governors and Foundation Chairs to designate twenty percent (20%) or more of their DDF to help match the Challenge. If districts have already given 20% of their DDF, encourage them to give any remaining DDF to the Challenge. *April 2008 Trustee Decision states that DDF contributions to the challenge will be matched US\$.50 from World Fund for every US\$1.00 of DDF, up to US\$3 million per year for the next three years on a first come, first served basis and there is still match available.*

FUND DEVELOPMENT

Contributions Update

Contributions for the eight months ending 28 February 2009 totaled US\$90,944,078, an increase of 5.34% in overall giving in the same time period last year. Contributions to the Annual Programs Fund at US\$56,322,821 are up slightly in most regions except in North America where annual giving is down by -19.16% resulting in an overall decline in contributions to -7.11%. Permanent Fund contributions are down -22.91% at US\$6,995,496. Restricted Giving is down 11.23% at US\$10,419,023. Contributions to the PolioPlus program are up 397.95% to US\$15,357,919 for the fiscal year. This amount does not include the contributions received from the Bill and Melinda Gates Foundation or the Google Foundation. It is a direct reflection of contributions received by individuals, Rotary clubs, and Interact and Rotaract clubs. Unrestricted Other references the Foundation's Donor Advised Fund contributions. Please alert your zone team, clubs and districts that contributions to the Annual Programs Fund made in this Rotary year can generate additional DDF in 2011-12 that can be used to support polio eradication in the final year of Rotary's US\$200 Million Polio Challenge.

	<u>February 2009</u>	<u>February 2008</u>	<u>Increase (Decrease)</u>
Annual Programs Fund	US\$ 56,322,821	US\$60,633,305	(7.11%)
PolioPlus	US\$ 15,357,919	US\$ 3,149,387	387.65 %
Permanent Fund	US\$ 6,995,496	US\$ 9,074,000	(22.91%)
<u>Restricted Giving</u>	<u>US\$ 10,419,023</u>	<u>US\$11,737,654</u>	<u>(11.23%)</u>
SUBTOTAL	US\$ 89,095,259	US\$84,594,346	5.32 %
Unrestricted – Other	<u>US\$ 1,848,819</u>	<u>US\$ 1,743,000</u>	<u>6.07%</u>
TOTAL	US\$ 90,944,078	US\$86,337,346	5.34%

2009-10 Zone Team Trainings

Zone Team Trainings are underway in some zones with other trainings planned through July 2009. As you identify your training dates, please submit them to your respective TRF staff training specialist, Melanie Davis, Jane Lee or Joaquin Mejia. The Fund Development staff is working with our colleagues in the RI Offices to prepare and provide you with your Zone Team Training Manuals and other materials in advance of your training meeting.

2009-2010 Fund Development Club Goal Report Forms

All club presidents-elect should receive their 2009-10 Fund Development Goal Report Forms at PETS. The Form is in their 2009-2010 Every Rotarian Every Year Club Success Kit (the "orange EREY envelope) in nine Rotary languages. The Goal Forms should be submitted to their District Governors-elect at PETS or by 1 May 2009. DGEs now have the option to enter all of their club's goals online through the Member Access Portal by 15 May 2009. All club goals will be tabulated and presented to the Trustees for review in determining the 2009-2010 Worldwide Annual Programs Fund Goal for announcement at the Rotary Convention in Birmingham, England in June 2009. The 2009-10 Fund Development Club Goal Report Forms are downloadable from Rotary's website in nine languages.

Updates to the Member Access Portal

Access to contribution reports via Member Access has been expanded at the club level. All club Foundation chairs and club treasurers now have access to their club and district reports. However, in order for the club Foundation chairs and club treasurers to gain access, the club president or secretary must assign these officer positions by clicking on "Update Club Data" on the Portal. Once these assignments are made, the club Foundation chair and club treasurer must be registered with their unique email address and security question on the site. The attached Member Access handout provides instructions and outlines the level of access granted to club and district officers. This handout is currently being translated and will be available shortly in nine languages.



Member Access
Facts

Final Quarter -- Year-End Calling Effort to Reach \$125,000,000

Please review your "*Contributions Progress Report as of 28 February 2009.*" In many zones, districts are seriously behind in their Annual Programs Fund goal achievement, largely due to competition from global economic factors and Rotary's US\$200 Million Challenge for polio eradication. Please contact your District Governors and District Rotary Foundation Chairs to discuss ways you can assist them in motivating their clubs to contribute to the Annual Programs Fund. Rotary could create miracles around the world if every club had 100% participation from its members. TELL THE ROTARY STORIES! We do great things. By contributing, we all can ***Make Dreams Real!*** It is also recommended to remind club and district leaders that contributions to PolioPlus do not count toward a club's Annual Programs Fund goals. Clubs striving to achieve annual banner recognition as an EREY Club, 100% Rotary Foundation Sustaining Member club or one of the Top Three Per Capita Giving Clubs may realize too late they are ineligible to receive a banner. Also, contributions to the Annual Programs Fund this year will generate District Designated Funds that can be directed to PolioPlus in the final year of the US\$200 Million Challenge. A continued decline in contributions to the Annual Programs Fund will cause a significant reduction in Foundation programs in 2010-2012. Thank you in advance for helping us to reach our Annual Programs Fund goal while helping others through the Foundation's many wonderful programs.

Reminder - 30 June 2009 Contribution Deadline

For contributions to be credited for the 2008-2009 Rotary year, contributions should be sent to the Foundation by early to mid-June to alleviate any of the late errors that may occur. The Foundation receives nearly 50% of all contributions in the last two months of the Rotary year. With one million transactions processed annually by the Foundation, it means that nearly 500,000 contributions are processed very late in the year. This can lead to unwarranted mistakes. The Foundation's Reclassification Guidelines allow just 90 days from the date of the gift receipt for corrections to be made. Late contributions can also mean missed recognition opportunities.

Ideas Wanted to Increase Giving in Difficult Economic Times

What are clubs and districts in your zone doing to encourage increased contributions to The Rotary Foundation despite the current economic climate? The Annual Giving Team would like to share these ideas throughout the Rotary world to inspire others to contribute. A simple idea can help make a difference in someone's life. Please send your stories and contribution ideas to the annual giving team at apf@rotary.org.

System Migration Issues

Over the next three years, Rotary will be transitioning to a new computer system. From time-to-time, Rotarians, clubs and districts may see what appear to be errors in their contribution reports. In most instances, these errors are not permanent but rather there is programming activity affecting that section of the data. If the errors do not clear up within a few days, they may be reported to the RI Office that services your area or emails may be sent to contact.center@rotary.org. Many clubs may see accounts marked "Duplicate" on their Club Recognition Summary. Those accounts are targeted to be merged into their correct account over the next several months as part of the system migration activities.

Permanent Fund

On 31 January 2009, the Permanent Fund's net assets were US\$150.5 million. As of 31 January 2009 the estimated expectancies to the Permanent Fund stood at US\$398.8 million. Therefore, the Permanent Fund's net assets and expectancies were US\$549.3 million. The goal is to reach US\$1 billion by 2025.

Bequest Society Update

As of 28 February 2009, there were 6,596 Bequest Society commitments with an expected value of US\$283.6 million. These commitments represent a significant percentage of the expectancies to the Permanent Fund and an increase of 32 new bequests valued at more than US\$700,000 since January.

Will you include The Rotary Foundation in your will or other estate plan to forever be a part of Rotary's legacy of doing good in the world?

Donor Advised Fund Update - U.S.

As of 28 February 2009, there were 132 Donor Advised Fund accounts with a fair market value of US\$5.6 million. www.rotary.org/DonorAdvisedFund

EDUCATIONAL PROGRAMS

ROTARY CENTERS FOR INTERNATIONAL STUDIES

Now is the Time for Clubs and Districts to Identify Qualified Candidates for the 2010-12 Rotary World Peace Fellowship

Rotary World Peace Fellowship applications with district endorsements are due to Evanston by 1 July 2009. Please make sure that all the districts in your zone are submitting applications for this important program. Tips on recruitment techniques and best practices are available. Help us increase the applicant pool again this year! Visit www.rotary.org/rotarcenters to download the application form and program guide for Rotarians.

Upcoming Rotary Center Seminars

Save the date and consider attending an upcoming Rotary Center seminar in your area:

Chulalongkorn University
Thursday, 9 April 2009

Duke University and University of North Carolina at Chapel Hill
Saturday, 4 April 2009

University of California, Berkeley
Sunday, 26 April 2009

Universidad del Salvador
Tuesday, 28 April 2009

University of Queensland
Saturday, 23 May 2009

International Christian University
Saturday, 6 June 2009

Archbishop Desmond Tutu is Keynote Speaker at Rotary World Peace Symposium

Archbishop Emeritus Desmond Tutu will be the keynote speaker at the Rotary World Peace Symposium held immediately prior to the Rotary International Convention in Birmingham, England. Join us at the Symposium and be inspired by a Nobel Peace Prize winner. Register for the Convention and Symposium at www.rotary.org.

Sign up to receive more rotary centers news at:

<http://www.rotary.org/en/StudentsAndYouth/EducationalPrograms/RotaryCentersForInternationalStudies/Pages/PeaceNetNewsletter.aspx>

Contact: Judy Gibson, Rotary Centers Department Manager, e-mail: judy.gibson@rotary.org or tel: +1-847-866-3834

AMBASSADORIAL SCHOLARSHIPS AND ROTARY GRANTS FOR UNIVERSITY TEACHERS

Regional Scholar Orientation Seminars

Thanks to Regional Scholar Orientation Seminars held throughout the Rotary world, 2009-10 Ambassadorial Scholars and University Teachers had (or will have) the opportunity to meet with their sponsor or host Rotarians to learn more about the work and membership of RI/ TRF, gain a better understanding of their responsibilities as "ambassadors of goodwill," expand their network of support by meeting other scholars, and acquire valuable practical knowledge from program alumni.

For the tenth year, the Trustees have offered grants to defray the costs of large-scale, multi-district outbound seminars. Over US\$140,000 has been awarded to 22 seminars for the 2009-10 academic year. Since attendance at an outbound orientation is mandatory for all Ambassadorial Scholars, the importance of these regional seminars has continued to grow.

We strongly encourage all RRFCs to get involved as much as possible with these amazing events, as they obviously bring a tremendous wealth of knowledge and field experience to our scholars, but also because we need RRFCs to meet our scholars and teachers to help us eradicate the preconceived idea that our program participants might not be a good return on our investment.

An updated list of Regional Scholar Seminars is posted on:

<http://www.rotary.org/en/StudentsAndYouth/EducationalPrograms/AmbassadorialScholarships/Pages/About.aspx> then go to http://www.rotary.org/RIdocuments/en_pdf/amb_scholar_seminars.pdf

Organizations Offering Curriculum/Vocational Training Related to Future Vision Plan Areas of Focus

At their April 2008 meeting, the Trustees made a decision to encourage all Rotary clubs and districts to carry out projects and activities in the Future Vision Plan areas of focus in the years leading up to the global implementation of the plan. In keeping with this decision, we are seeking assistance with identifying:

- Colleges and universities that offer curricula in one or more areas of focus for Ambassadorial Scholars
- Other institutions or organizations that might support vocational training activities in one or more areas of focus for Group Study Exchange teams

As of the 1 March 2009 benchmark deadline, we have received completed host institution surveys from approximately 20% of the RI districts in total. We are still receiving surveys almost daily and look forward to hearing from more of your districts. We understand that researching potential host institutions of higher education and vocational training can be time consuming, especially for those districts that contain several high quality institutions. Please encourage your District Rotary Foundation Coordinators and Scholarship Subcommittee Chairs to complete and email their forms and our staff will continue researching the great leads and prepare to post them on the RI website in the near future.

Contact: Brad Lauman, Scholarships Department Manager, email: Brad.Lauman@rotary.org or tel: +1-847-866-3323

GROUP STUDY EXCHANGE (GSE)

Preparations for the 2009-10 GSE Chair Summer Mailing

As the GSE department begins to prepare for our annual GSE summer mailing of 2009-10 program publications, we would like to alert all districts that this year's mailing will be electronic.

In an effort to reduce paper documentation and costs associated with the updating and distribution of our publications, we have been moving to produce documentation in an increasingly electronic manner. All GSE publications will be available on the Rotary website for download, as well as on the GSE secure site. Links to these locations will be provided in the mailing.

The GSE department encourages Rotary districts to forward these links to interested applicants, in order to reduce printing of paper applications prior to the selection of GSE teams.

Additional information pertaining to the electronic mailing will be sent out to GSE Chairs in the coming months; however, we would encourage all District Governor-elects to please indicate their district's 2009-10 GSE Chair on their assignment forms, so that we may send this mailing to the appropriate person at the beginning of the upcoming program year. Copies of the mailing will also be submitted to District Rotary Foundation Chairs and District Governors.

Should your district have any questions about the new electronic format of the GSE Chair mailing, please contact your coordinator at TRF.

2010-11 District Application Mailing

Similar to the GSE publications mailing, the annual GSE District Application mailing (which is sent out to each incoming Governor-elect) will also be electronic this year. In previous years, the GSE department has sent copies of the District Applications electronically to all District Governors-elect at the start of the Rotary year and then followed this mailing with a hard copy mailing by post. This year, we will no longer send hard copies of the form in the mail.

GSE Team Travel Arrangements

All districts are reminded that this year Rotary International Travel Services (RITS) is strictly enforcing the submission of the **Travel Request Form** no less than 45 days prior to each team's travel. GSE teams who submit their form after this deadline may be released to purchase their plane tickets locally or be obligated to postpone their travel to a later date in order to allow for the purchase of appropriately-priced plane tickets. Please refer to the e-mail communication which was sent out earlier this year, regarding the enforcement of submission of the **Travel Request Form**.

In addition, please note that the **Travel Request Form** must be submitted complete with any additional post-GSE personal travel when it is sent to the GSE department and RITS. Based on the high volume of GSE teams currently traveling, RITS representatives will work on a team's itinerary only one time and cannot rework itineraries in order to accommodate further requests.

As with previous travel seasons, RITS requests that all teams submit typed Travel Request Forms. Electronic copies of the document can be obtained either from your GSE Coordinator at The Foundation or on the GSE CD-ROM. Forms are available in all Rotary languages.

Should your district have any specific travel questions regarding GSE flight arrangements or procedures for booking travel, please feel free to direct them to your GSE coordinator at TRF.

Pre-departure Documentation

The GSE department requests that all districts submit typed Team Leader and Member applications, as opposed to hand-written documents. Submission of typed pre-departure documentation assists both the GSE department and the Alumni Relations department in ensuring that accurate information is recorded in The Foundation's records for all GSE participants.

Should districts not have copies of the 2008-09 GSE publications CD, please contact your TRF staff coordinator. Electronic copies of these documents can be forwarded upon request.

ALUMNI RELATIONS

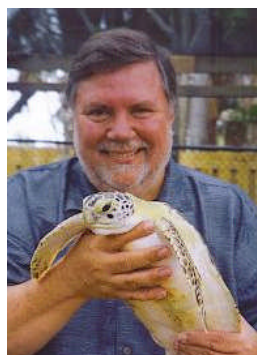
Rotary Alumni Celebration – Birmingham, England

Please continue to encourage interested TRF alumni to register for the Rotary Alumni Celebration, held on Saturday, 20 June, just before the start of the RI Convention. For more information, visit <http://www.rotary.org/en/Members/Events/Convention/Pages/Preconregistration.aspx#4>.

Alumni Updates

Ambassadorial Scholars

Terry L. Maple, 1971-72 Ambassadorial Scholar sponsored by the Rotary Club of Chula Vista, California, USA (District 5340) to attend University of Stockholm, Institute for English Speaking Students in Sweden (District 2350)



Dr. Terry L. Maple is best known for his visionary leadership in revitalizing an Atlanta, Georgia, USA zoo after it was ranked as one of the worst zoos in the US due to mismanagement and neglect. In his eighteen years of reform direction, Zoo Atlanta became recognized as one of the world's most innovative zoological parks. Its partnership with local television produced six Emmy Awards for their programming, and the Georgia Wildlife Federation honored Zoo Atlanta as Conservation Organization of the Year in 1991. Maple received the 1999 President's Award from the Atlanta Convention and Visitors Bureau for his contributions to tourism in Georgia. Maple is also known for his scientific contributions to the fields of comparative and environmental psychology, animal welfare, and wildlife conservation. He taught at Georgia Institute of Technology for 30 years and was the author and editor of more than 200 scientific publications. His 10th book *A Contract with the Earth* (co-authored with former Speaker of the House, Newt Gingrich) was published in October 2007.

As president of the Association of Zoos and Aquariums (AZA), Maple worked to differentiate AZA institutions from roadside attractions and strengthened their scientific foundation. An experienced fund-raising executive, he also consults regularly with aspiring non-profit organizations in the museum industry.

Maple currently serves as president and CEO of the Palm Beach Zoo in West Palm Beach, Florida, USA and has established a working partnership in conservation, education, and science with Florida Atlantic University. Under his direction, the Palm Beach Zoo is building an innovative animal care complex including a state-of-the-art animal hospital and a Center for Conservation Medicine, scheduled to open in March 2009.

Daniel A. Witt, 1984-85 Ambassadorial Scholar sponsored by the Rotary Club of Dearborn Heights, Michigan, USA (District 6400) to attend Victoria University of Wellington in New Zealand (District 9940)



Daniel A. Witt is president of the International Tax and Investment Center (ITIC) which he helped found in September 1993. ITIC is a multinational nonprofit organization that helps lower the barriers to tax, trade, and investment by facilitating the exchange of information between business executives, academic experts, and government officials in countries with transition economies. It has offices in the US, Russia, Kazakhstan, Azerbaijan, Ukraine, The Philippines, and UK. Prior to assuming the duties as president of the Center, Witt was executive director of the Tax Foundation, the oldest tax and budget research organization in the United States. There he helped to dramatically improve the organization's finances by more than doubling its revenues. He was also vice president and director of membership with Citizens for a Sound Economy, a 250,000-member Washington-based public interest group. While there he served as a consultant to President Reagan's commission on privatization. Witt is an honorary professor of economics at the Kazakh State Academy of Management, a member of the Board of Trustees for the Eurasia Foundation, the Council Executive Board member, and district chairman for the Boy Scouts of America in Washington, DC., USA.

Farland Chang, 1985-86 Ambassadorial Scholar sponsored by the Rotary Club of Rossmore (Walnut Creek), California, USA (District 5160) to attend University of Bristol, UK (District 1100)



Farland Chang is an Emmy Award winning international journalist, executive producer and founder of WorldBizWatch. In a journalism career spanning more than 20 years, he has covered top stories across Asia and North America. He launched CNN's Asia Business Morning, conducting live interviews with market strategists, industry analysts, entrepreneurs, and movers and shakers. Chang also produced and reported the popular weekly segments Asia Rising and Entrepreneurs Only, which focused on the best success stories in Asia. Before joining CNN, he served as a network correspondent for NBC News, and earlier, reported for television and radio news organizations in Seattle, Philadelphia, New York, Washington, DC, Hawaii and Guam. Chang also served as international trade coordinator and press secretary for the former Lieutenant Governor of Delaware, S.B. Woo.

Group Study Exchange

Toshiko Miyashita 2003-2004 GSE team member sponsored by the Rotary Club of Kawasaki Takatsu South (District 2560) to Minnesota and Wisconsin, USA (District 6250)

Toshiko is currently a freelance reporter and lyricist working for various radio programs in her native Japan. Toshiko's song, "Furusato," released in 2008, was adopted as a promotional song for Ibaraki Prefecture's project "Ibaraki Satoyama." She has also released a mini-album entitled "Trust." One of the songs on the album was later utilized as a promotional song for the Foundation for Global Peace and Environment. "Trust" was also recently featured in a morning program on TBS, a major Japanese broadcasting station.

In her spare time she speaks publicly, delivering inspirational speeches on topics ranging from the values of life to communication and writes on the subject of nursing care.

Dr. Shashank Rathod, 1996-1997 GSE team leader sponsored by Rotary Club of Ahmedabad Metro, Gujarat, India (District 3050) to The Netherlands (District 1610)

Dr. Rathod, now Director of the Department of Eye Care in Shalby Hospital in Ahmedabad, Gujarat, India, recently performed cataract surgery on the eyes of Ugandan Vice-president Gilbert Bukenya. Dr. Rathod considers this an honor and professional achievement to have been able to operate on such a highly distinguished head of state. He has operated on thousands of needy cataract patients both in India and abroad, organized a Free Eye Check Camp at Shalby Hospitals in October 2008.



Above: Professor Gilbert Bukenya with Dr. Rathod (right) following the surgery.

Rotary Centers for International Studies

Audra Degeys, 2007-09 Rotary World Peace Fellow to University of Bradford, UK, (District 1040) sponsored by the Rotary Club of Willoughby Hills, Ohio, USA, (District 6630)



Audra Degeys is among the most recent graduates of the Rotary Centers, having finished her studies in December 2008. Upon returning to the US, Audra asks, rhetorically, “What do I want to do?” Her response: “anything development- or peace education-related.” Upon further examination, her response to this question is much more nuanced and detailed. But even her short response has led her along the beginnings of a career path.

She writes, “Presently I am an adjunct faculty member at the University of Maryland Baltimore County (UMBC) Department of Continuing and Professional Studies. I teach courses to foreign/visiting students who are enrolled in associate degree, non-degree, and bachelor's level degree programs at UMBC. I currently aid international students in their cultural transition to "American" life through a course is designed to enable

international students to develop intercultural communication skills within the context of a globalizing world and to prepare for the multiculturalism of the "American" society and academic life. Students focus on and develop speaking, listening and conflict resolution skills. I'm enjoying teaching this class.”

The seeds of interest in conflict resolution and education were sown during Audra’s Applied Field Experience while at the University of Bradford. She embarked on an internship with the Sesame Street Workshop in New York City. While there, she worked in educational programming, content review, curriculum development, and research for areas of conflict, particularly for Kosovo, Israel/Palestine, Jordan, and Colombia.

Mohammad Aref Noorzai, Afghanistan, Rotary World Peace Fellow, January – March 2009, Chulalongkorn University, Thailand, sponsored by the Rotary Club of Houston, Texas, USA (District 5890)

Aref Noorzai demonstrates the wide range of backgrounds from which peace fellows come to Rotary's World Peace Fellowship. From 1995 to 1999, Aref played for Afghanistan's national football (soccer) team, being named best football player in Afghanistan in 1997. He went on to coach the Herat city team, as well as take part in national coaching seminars in Afghanistan and abroad. He is not merely an athlete. He was an English professor at Herat University and is now the vice president of the board of directors and an instructor for the Institute for Leadership Development, an American post-graduate education center in Herat.

He hopes that his experiences as Rotary World Peace Fellow will help him to train current and future leaders of Afghan society. He writes, "Sadly, because of years of war, many of the men who would be an influence to raise up the next generation are simply not here; or as in many cases, are not well emotionally...Killing, executions, massive persecution, forced internal displacement, and violence have left a permanent mark on the population; and now it is grappling without proper leadership."

HUMANITARIAN GRANTS PROGRAM

Humanitarian Grants Budget

Due to the global economic downturn and volatile investment climate, Rotary International and The Rotary Foundation, like many charitable organizations, have had to make some difficult decisions in response to the current financial situation. The Rotary Foundation (TRF) has experienced significant unrealized investment losses and General Secretary Ed Futa has provided regular updates to Rotarians regarding the situation as part of an ongoing effort to keep the Rotary world informed.

At their January 2009 meeting, the Trustees reduced the Humanitarian Grants budget by US \$16.3 million for the 2008-09 Rotary year in an effort to minimize the impact of unrealized losses to Foundation assets. Matching Grants and Volunteer Service Grants will be most immediately impacted by this decision. District Simplified Grants and 3-H Grants will not be impacted in 2008-09.

Matching Grants

As of 2 March 2009, the Matching Grant budget has been fully committed and the Trustees of the Foundation are unable to approve any additional grant applications. As a result of the budget reductions, no new Matching Grant applications will be accepted in the 2008-09 Rotary year. Applications that were received by TRF prior to 2 March 2009 and are currently pending will be kept on file, and subsequently reviewed after the start of the new Rotary year. These applications will be approved on a first-come, first-serve basis when all requirements are complete. An email communication will be sent to the sponsors of pending applications providing them with these details. Any new applications submitted to TRF will be returned to the sponsors, and they will be asked to re-submit the application after 1 July 2009 for consideration at that time. Grants that have already been approved this Rotary year will not be affected and will be processed for payment.

Volunteer Service Grants (VSG)

At this time, the budget for Volunteer Service Grants has been fully committed for the 2008-09 Rotary year, and **no further applications will be accepted.** In light of this development, please note the following moving forward:

- The sponsors of pending VSG applications will be notified that their applications cannot be considered for funding in the 2008-09 Rotary year.
- Any new VSG applications received by TRF will be returned to the sponsors with an explanation.
- Any Volunteer Service Grants that are already approved will not be affected and will be processed for payment.

Information about Humanitarian Grants funding for the 2009-10 Rotary year will not be available until after the April 2009 Trustee meeting. Any decisions taken at that meeting will be communicated to Rotarians well in advance of the start of the 2009-10 Rotary year.

Sponsors of applications that do not receive a grant in the current Rotary year are encouraged to fund their humanitarian efforts via other sources if possible. The RI website will be updated regularly as soon as new information is available. In addition, a frequently asked questions document is attached and will be available for download at: www.rotary.org Should you have further questions about Humanitarian Grant processing in 2008-09 please contact us at contact.center@rotary.org or contact the grant coordinator for your application. For further information on the financial statements of The Rotary Foundation visit www.rotary.org

World Reporting

The next world reporting analysis will be conducted in March 2009 for consideration at the April 2009 Trustee meeting. According to the Trustee guidelines, a district below 70% compliance on grant reporting after two semi-annual analyses will be suspended from participating in Humanitarian Grants. If a district's reporting percentage was below 70% in October 2008, it is critical that the district increase its reporting percentage above 70% before the next world reporting analysis to avoid a possible suspension from Humanitarian Grants.

Submission of District Simplified Grant Requests for 2009-10

If districts in your zone have not yet submitted their DSG request for 2009-10, **now** is the time to do so. The deadline for submitting these requests is 31 March 2009. All districts received a mailing in August 2008 that contained the District Simplified Grant request form as well as the maximum amount of funds that your district may request for 2009-10. Districts with approved DSGs for 2008-09 must submit payment requirements by 15 May 2009. Any questions regarding this process may be directed to the appropriate grant coordinator.

Humanitarian Grants District Support Forum

In July 2007, TRF launched the Humanitarian Grants District Support Forum, an online forum available through Member Access, intended to provide information and resources to those leaders that work most closely with Humanitarian Grants: district governors, district governors-elect, district Rotary Foundation committee chairs, district grants subcommittee chairs and regional Rotary Foundation coordinators. Leaders in those positions are encouraged to visit the site often as new content is being added on a regular basis. In an effort to improve this forum, we would appreciate your feedback via a brief online survey. Even if you have not used the Forum, we encourage you to complete the survey. The survey is accessible via the following link: http://www.surveymonkey.com/s.aspx?sm=S4duXeO29PVy5fWp2n2bJA_3d_3d

Humanitarian Grants Success Story

The Rotary Clubs of Kabale, Uganda (D9200) and Nevada City, USA (D5190) are currently working together on a 3-H Grant in Uganda that promises to have a tremendous impact on the local community. This project intends to reduce illness, improve health and hygiene and provide livelihoods to Batwa tribes people making the transition from hunter/gatherers to domestic agriculture having been expelled from their traditional hunting grounds. The goal of this project is to decrease child mortality and improve overall child health by establishing small goat herds to provide milk and meat to the local clinic hospital and schools to treat malnourished children with protein deficiencies. It will also provide or improve water delivery at least 12 sources, sanitation facilities and hygiene education to reduce waterborne illness for more than 5,000 people. Recipients of the herds will be trained in livestock care, husbandry and cheese making so that herds can grow, and supplies of meat, milk and cheese can be marketed for income. This project draws on both local and international Rotarian expertise and participation in participation with the local health clinic and community volunteers.

More information about this project can be found on the following website:

<http://www.gondauganda.blogspot.com/>